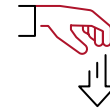


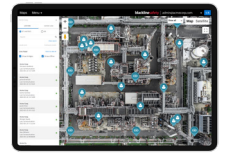
Up to 8 gas detection



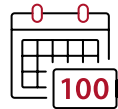
GPS location technology



Drop-and-go deployment



24/7 Live safety monitoring



Up to 100 days of battery life



Dual display: Live readings and dashboard



Direct-to-cloud connectivity



Analytics reporting

EXO 8

AREA MONITOR

The only cloud-connected portable area monitor capable of detecting up to eight gases with optional gamma radiation sensor for robust hazard protection and early threat detection. EXO delivers real-time data streaming to the cloud for unparalleled situational awareness and rapid incident response – all in one rugged, drop-and-go device with up to 100 days of battery life.

DEVICE SPECIFICATIONS	
MATERIAL	Rugged housing built from aluminum, plastic and rubberized bumpers
WEIGHT	12.25 Kg (27 lbs)
DIMENSIONS	385 mm x 188 mm x 220 mm (15.1" x 7.4" x 8.7")
TEMPERATURE	Operating: -20°C to 50°C (-4°F to 122°F) Storage: -40°C to 60°C (-40°F to 140°F)
HUMIDITY	15 to 90% RH Non-condensing
DATA	Logging: Every minute Update interval: Every 30 minutes; instantly upon high urgency events, and every 5 seconds until event cleared
APPROVALS/STANDARDS	RoHS, CE Canada & USA: Class I Division 1 Group A,B,C,D T3; Class I Zone 0 AEx ia IIC T3; Ex ia IIC T3 Ga IECEX: Ex ia IIC T3 Ga ATEX: Ex ia IIC T3 Ga LEL Performance: CSA C22.2 No.152; ISA 12.13.01
IP RATING	Designed to meet IP66
SOUND LEVELS	Sounder db rating: 110 dB @ 30 cm (12 inches) Speaker db rating: 73 db @ 30 cm (12 inches)
SENSORS	Standard: 4 sensors, up to 5 gases Optional gas expansion module: 8 sensors, up to 8 gases
WARRANTY	Three-year hardware warranty, extended warranty available. Blackline complete lease option provides comprehensive warranty for full term.

CONNECTIVITY	
LOCATION AWARENESS	Multi-constellation: GPS/QZSS, Galileo, BeiDou Receiver type: 72-channel Assisted-GNSS: Yes GNSS Accuracy: 5 m (16 feet), CEP 50%, 24 hours static Optional Beacon for indoor location accuracy
CELLULAR	Wireless coverage: 100 countries, 200 wireless carriers North America: 3G/4G radio; 3G UMTS bands 2 and 5; 4G bands 2, 4 and 5 International: 2G/4G radio; 2G GSM bands E-GSM and PCS; 4G bands 3, 7 and 20 Asia Pacific: 3G/4G radio; 3G UMTS band 1; 4G bands 3, 8 and 28 Antenna: Internal
SATELLITE	Optional satellite module for connecting to the Iridium satellite network Radio: 1621 MHz, 2 Watts Antenna: Internal
BLUETOOTH	(4.2 BR/LE)
WIRELESS UPDATES	Over-the-air device configurations Over-the-air firmware upgrades
OPTIONAL PTT	Send and receive voice messages to other G7 and EXO devices

BATTERY AND CHARGING	
RECHARGEABLE BATTERY	144 Ah (LiFePO4)
CHARGE TIME	~12 hours
BATTERY LIFE	Battery life in diffusion mode: 100 days at 20°C (68°F), LEL-MPS, H2S, CO and O2 configuration Battery life in pump mode: 30 days at 20°C (68°F), LEL-MPS, H2S, CO and O2 configuration

USER INTERFACE

DISPLAY	Dual 3.4" diagonal, 272 by 451 pixel, 64-color liquid crystal displays (LCD)
BUTTONS	Menu system: Driven by three-button keypad Power button: On/off
SOS LATCH	Send SOS alert
LANGUAGES	Multi-language support: EN, FR, ES, DE, IT, NL, PT

OPTIONAL PUMP MODULE

CHANNELS	4
OPERATING TEMPERATURE	-20°C to 50°C (-4°F to 122°F)
SAMPLE LENGTH	Up to 30 m (100 ft)

INTERFACE PORTS

A/B	Intrinsically safe, configurable external signal ports designed to integrate with external alarms and electrical systems Four pins per interface port
------------	--

EXO ACCESSORIES



Satellite Module



4 Gas Pump Module



Gas Expansion Module



Survey Tripod



Standoff Base



Universal Mount



Solar Power Kit



Location Beacon

For more EXO accessories visit blacklinesafety.com/accessories.

GAS CARTRIDGE AND SENSORS

GAS	SENSOR TYPE	RANGE	RESOLUTION
AMMONIA (NH ₃)	Electrochemical	0–100 ppm	0.1 ppm
CARBON DIOXIDE (CO ₂)	NDIR	0–50,000 ppm	50 ppm
CARBON MONOXIDE (CO)	Electrochemical	0–500 ppm	1 ppm
CHLORINE (CL ₂) ¹	Electrochemical	0–20 ppm	0.1 ppm
CHLORINE DIOXIDE (CLO ₂) ¹	Electrochemical	0–2 ppm	0.01 ppm
COSH (CO & H ₂ S)	Electrochemical	0–500 ppm CO and 0–100 ppm H ₂ S	1 ppm CO and 0.1 ppm H ₂ S
HIGH-RANGE AMMONIA (NH ₃)	Electrochemical	0–500 ppm	1 ppm
HIGH-RANGE CARBON MONOXIDE (CO)	Electrochemical	0–2000 ppm	5 ppm
HIGH-RANGE HYDROGEN SULFIDE (H ₂ S)	Electrochemical	0–500 ppm	0.5 ppm
HYDROGEN (H ₂) (UK/EU ONLY)	Electrochemical	0–40,000 ppm	1% LEL (400 ppm H ₂)
HYDROGEN CYANIDE (HCN) ^{1,4}	Electrochemical	0–30 ppm	0.1 ppm
HYDROGEN FLUORIDE (HF) ⁴	Electrochemical	0–100 ppm	0.1 ppm
HYDROGEN RESISTANT CARBON MONOXIDE (CO-H)	Electrochemical	0–500 ppm	1 ppm
HYDROGEN SULFIDE (H ₂ S)	Electrochemical	0–100 ppm	0.1 ppm
LEL - INFRARED (LEL-IR)	NDIR	0–100% LEL	1% LEL
LEL- MOLECULAR PROPERTY SPECTROMETER (LEL-MPS) ³	MPS	0–100% LEL	0.1% LEL
NITROGEN DIOXIDE (NO ₂)	Electrochemical	0–50 ppm	0.1 ppm
OXYGEN (O ₂)	Pumped electrochemical	0–25% vol	0.1% vol
OZONE (O ₃) ⁴	Electrochemical	0.1 ppm	0.1 ppm
PHOTOIONIZATION (PID)	PID	0–4,000 ppm	Dynamic resolution ² , 0.1 ppm
SULFUR DIOXIDE (SO ₂)	Electrochemical	0–100 ppm	0.1 ppm

¹ Sensor not compatible with pump module. ² Dependent on correction factor. ³ Operating Pressure: 80 to 120 kPa (11.6 to 17.4 psi). ⁴ Compatible with gas expansion module coming soon.



NORTH AMERICA 1 800 486 8889 | sales@blacklinesafety.com
EUROPE +44 1787 222684 | eusales@blacklinesafety.com
REST OF WORLD +1 403 451 0327 | sales@blacklinesafety.com

blacklinesafety